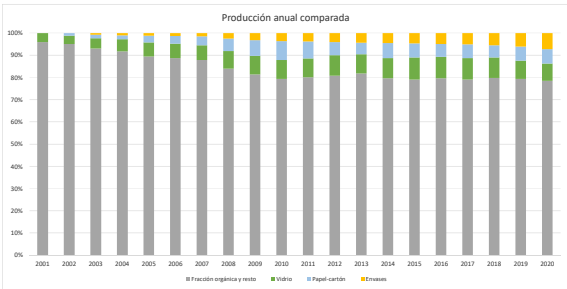
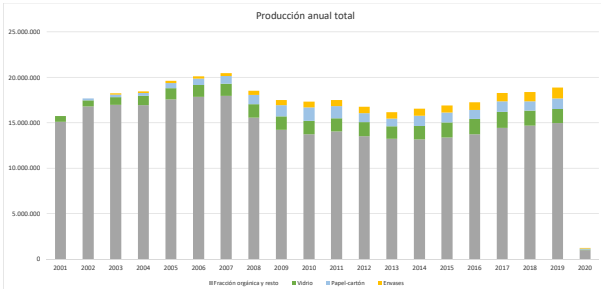


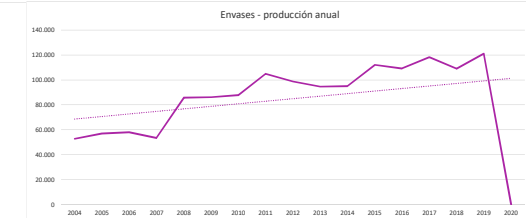
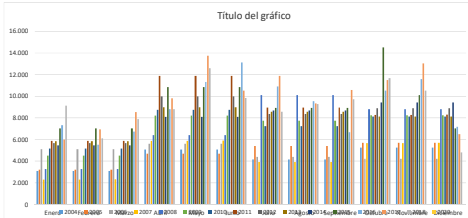
CANTIDADES RECOGIDAS R.S.U.

PORCENTAJES POR FRACCIÓN (%)																					
Totales anuales	2001	2002	2003	2004	2005	2006	2007	2008	2009	2010	2011	2012	2013	2014	2015	2016	2017	2018	2019	2020	
Fracción orgánica y resto	15.103.344	16.788.098	16.981.095	16.933.650	17.563.030	17.849.010	17.953.170	15.578.480	14.248.490	13.739.360	14.029.720	13.526.820	13.225.040	13.156.300	13.974.764	13.739.407	14.443.339	14.671.484	14.970.465	971.879	
Vidrio	634.430	678.420	634.690	1.029.390	1.225.930	1.313.660	1.369.200	1.461.990	1.436.600	1.479.520	1.542.310	1.398.880	1.499.070	1.675.510	1.675.330	1.675.510	1.765.992	1.675.340	1.568.368	95.490	
Papel-cartón		208.408	208.014	306.029	379.876	679.240	839.420	1.043.020	1.238.680	1.479.460	1.329.740	984.800	837.760	1.125.769	1.089.780	991.680	1.146.910	1.004.696	1.168.865	80.500	
Envases			139.830	200.080	233.860	280.360	292.400	455.200	652.560	674.560	670.400	692.380	705.200	752.000	706.200	862.220	928.980	1.027.300	1.165.800	90.060	
Total Kg	16.774.774	17.673.636	18.241.629	18.489.149	19.422.990	20.122.270	20.449.690	18.538.990	17.494.439	17.115.960	17.509.390	16.746.710	16.166.940	16.932.199	16.916.774	17.268.817	18.286.121	18.770.720	18.802.318	1.237.963	
Orgánica y resto (%)	96,0	95,0	91,7	89,5	88,7	87,8	84,0	81,3	79,3	80,1	80,8	81,8	79,6	79,1	79,6	79,0	80,4	79,9	79,4	78,5	
Recogidas Selectivas (%)	4,0	5,0	6,9	8,3	10,5	11,3	12,2	15,0	18,7	20,7	19,9	18,2	18,2	20,4	20,9	20,4	21,0	20,2	20,6	21,5	
Vidrio (%)	4,7	3,8	3,4	5,4	6,2	7,2	6,7	7,7	8,1	8,5	8,5	8,2	8,7	9,7	9,7	9,7	9,7	9,7	6,2	7,7	
Papel-cartón (%)	0,0	1,2	1,1	1,7	2,0	3,7	4,3	5,6	7,1	8,5	7,6	6,9	5,7	6,6	6,3	5,7	6,4	6,2	6,2	6,6	
Envases (%)	0,0	0,0	0,8	1,1	1,2	1,4	2,4	3,2	3,7	3,9	3,9	4,1	4,2	4,5	4,2	4,9	5,1	5,5	5,5	6,2	



ROPA-CALZADO

KG RECOGIDOS	2004	2005	2006	2007	2008	2009	2010	2011	2012	2013	2014	2015	2016	2017	2018	2019	2020	Incremento	
Enero	3.099	3.215	5.116	2.309	3.278	4.517	5.157	5.885	5.673	5.850	5.467	7.032	7.313	5.963	9.138	7.707	100%	-100%	
Febrero	3.099	3.215	5.116	2.310	3.278	4.517	5.157	5.885	5.672	5.850	5.467	7.031	7.312	5.964	9.137	7.706	100%	-100%	
Marzo	3.099	3.215	5.116	2.320	3.279	4.518	5.156	5.886	5.672	5.849	5.466	7.031	6.719	8.550	7.886	5.696	100%	-100%	
Abril	5.087	4.691	5.606	5.883	6.409	8.214	8.739	11.877	9.983	8.986	8.105	10.857	8.808	9.806	8.799	11.087	100%	-100%	
Mayo	5.087	4.691	5.606	5.883	6.409	8.214	8.739	11.878	9.983	8.986	8.105	10.856	11.311	13.753	12.600	11.662	100%	-100%	
Junio	5.087	4.691	5.607	5.886	6.410	8.214	8.738	11.878	9.983	8.986	8.104	10.856	13.134	10.512	9.851	10.716	100%	-100%	
Julio	4.146	5.386	4.383	3.921	10.101	7.741	7.227	8.954	8.358	8.564	8.684	8.935	10.907	11.864	8.580	11.982	100%	-100%	
Agosto	4.146	5.386	4.383	3.918	10.101	7.741	7.227	8.955	8.358	8.563	8.693	8.936	9.326	9.286	8.261	100%	-100%		
Septiembre	4.146	5.386	4.383	3.932	10.101	7.741	7.226	8.955	8.357	8.563	8.693	8.934	9.675	10.579	9.720	10.775	100%	-100%	
Octubre	5.246	5.708	4.233	5.679	8.902	8.248	8.137	8.285	8.506	8.128	8.439	14.530	10.517	11.491	11.690	14.821	100%	-100%	
Noviembre	5.246	5.708	4.234	5.679	8.903	8.248	8.137	8.285	8.505	8.126	8.439	10.106	11.594	13.024	10.524	13.394	100%	-100%	
Diciembre	5.246	5.708	4.234	5.694	8.903	8.248	8.137	8.285	8.505	8.125	8.439	7.037	7.199	6.498	4.621	8.320	100%	-100%	
TOTAL	62.734	66.984	68.617	63.424	85.774	86.161	87.777	106.010	98.795	94.634	96.111	112.140	109.231	118.331	109.096	121.105	0	100%	-100%
		108%	102%	92%	106%	100%	102%	120%	94%	96%	101%	118%	108%	111%	108%	111%	0%		



POBLACIÓN

MES	2001	2002	2003	2004	2005	2006	2007	2008*	2009*	2010*	2011*	2012*	2013*	2014*	2015*	2016*	2017*	2018*	2019*	2020*
Enero	26.643	29.377	31.435	36.387	34.811	34.772	36.384	28.987	25.098	24.048	23.032	23.942	21.914	21.935	23.044	25.373	24.620	25.971	25.463	26.623
Febrero	29.272	29.996	32.134	32.991	34.052	36.706	34.438	28.121	25.304	25.272	24.295	24.921	21.901	22.835	22.462	25.017	23.937	22.914	24.865	0
Marzo	29.388	34.808	37.508	34.297	40.417	39.083	41.816	32.380	26.613	26.126	26.716	25.611	25.841	24.942	24.426	27.738	27.340	28.671	28.991	0
Abril	35.625	39.953	44.989	43.811	41.531	48.354	46.932	30.424	32.382	30.161	33.080	30.430	27.634	29.794	29.673	28.231	32.773	32.664	33.717	0
Mayo	35.094	39.044	43.346	40.912	44.547	45.715	47.211	32.402	30.832	28.852	30.648	27.993	28.308	29.416	28.788	31.360	33.121	35.504	33.121	0
Junio	38.450	43.896	48.203	47.597	48.987	50.395	50.565	35.632	33.993	33.692	35.374	33.431	32.119	32.850	33.794	35.491	37.987	36.204	38.294	0
Julio	48.648	51.744	57.376	54.240	59.421	59.818	60.362	45.703	42.360	43.227	44.089	42.668	40.769	43.022	44.430	43.988	45.958	46.726	49.208	0
Agosto	69.427	64.654	67.898	60.571	69.698	70.847	70.819	54.319	51.411	55.126	54.410	51.615	51.765	51.966	52.837	53.222	56.483	54.541	58.638	0
Septiembre	40.461	40.038	39.324	44.638	49.325	50.148	49.477	36.983	34.729	34.846	35.488	33.812	33.412	33.985	33.259	34.447	36.499	35.621	38.388	0
Octubre	33.116	40.083	40.563	41.313	41.354	45.959	30.367	29.550	29.428	28.354	26.492	26.675	26.914	28.001	28.511	30.960	31.587	30.380	30.380	0
Noviembre	28.140	32.849	29.952	36.777	37.674	37.782	37.988	25.450	24.985	24.842	24.922	23.483	21.548	22.616	23.948	24.451	25.740	26.529	24.527	0
Diciembre	27.053	31.394	26.911	35.200	34.784	35.622	35.295	23.974	25.492	23.208	23.294	21.783	22.225	22.493	23.927	25.176	25.395	26.337	26.577	0
MEDIA MENSUAL	38.869	40.271	41.860	42.613	44.714	45.675	46.601	33.720	31.895	31.668	31.919	30.536	29.467	30.137	30.821	31.461	33.238	33.412	34.286	2.213

*Se incrementa a 1.5kg/basura/habitante se incrementa a 1.5kg/basura/habitante